

Business model

The engine of value creation

INPUTS



Widespread presence

We have nine manufacturing units located across the world in key markets, which enables us to serve our customers better.



Experienced management team

Our management team possesses more than 110 years of cumulative experience and are well-versed with the nuances of the auto industry.



Strong track record

We possess a strong track record and have been successfully able to navigate all headwinds.



R&D prowess

We place great focus on R&D and have spent around INR 1,761 million on R&D initiatives over the last three years.



Effective governance

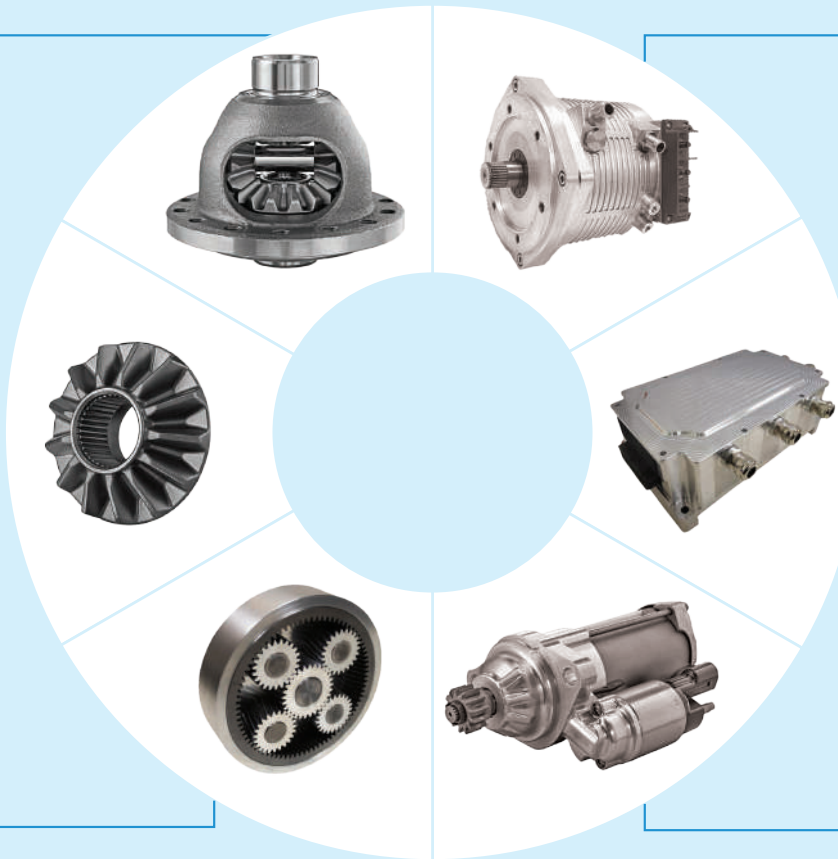
Our Board maintains high standards of corporate governance to ensure sustainable growth and success

OUR PRODUCTS

Differential assemblies

Differential gears

EV transmission gears

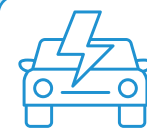


EV traction motors

Motor control units

Conventional and micro/plug-in hybrid starter motors

STRATEGIC PRIORITIES



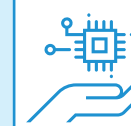
Increasing EV presence



Increasing global markets share



Diversifying revenue mix



Investing in technology

OUTCOMES

Revenue:
INR 21,306 million

EBITDA:
INR 5,591 million

PAT:
INR 3,615 million

EPS:
INR 6.21 per share

5-year revenue CAGR:
34.2%

5-year average EBITDA:
27.4%

Amongst the leading player in the automotive technology space

Global market share in differential gears:
6.3%

Global market share in starter motors:
4.6%

New products developed during the year:
3

Order book as on 31st March, 2022:
INR 186 billion